

How Purple Mash supports schools in meeting the UK Government's digital and technology standards.



Purple Mash from 2Simple is an easy-to-use learning platform with ready-made content that enables schools to meet the UK Government's digital and technology standards effectively. With its wide-ranging tools, resources, and curriculum alignment, Purple Mash directly supports teaching, learning, and operational excellence in primary education.

Need more support? Contact us:

Call: 020 8203 1781 | Email: support@2simple.com | Visit: help.2simple.com



1. Complete Scheme of Lessons, Curriculum Alignment and Digital Competence

The UK Government's guidance emphasises equipping students with essential digital skills. Purple Mash provides comprehensive support through its Computing Scheme of Work, aligned with the National Curriculum, addressing the following:

- **Computer Science:** Progressive coding lessons using 2Code takes pupils from foundational block-based coding to advanced text-based programming, ensuring conceptual clarity and skill mastery. This goes beyond the requirements of the National Curriculum with the inclusion of Python in Pieces for schools.

The step-by-step lesson plans mean that you can literally pick it up and go. That's the beauty of it for me because it ensures consistency across the school.

Oliver Booth
Computing Lead at The Harmony Trust.

- **Digital Literacy and Online Safety:** 2BeSafe offers comprehensive coverage of the guidance set out within the Department for Education's guidance. For each objective there is a short session to promote discussion, greater thinking and deeper reflection in order to raise the profile of the importance of staying safe online.

Purple Mash has had a massive impact... the skills would not be where they are now, especially for those teachers who aren't so confident.

Clare Mathema
Computing Leader at Sherborne House School.

- **Cross-Curricular Integration:** Tools such as 2Investigate, 2Graph, 2Publish and 2Survey facilitate the use of technology in subjects like English, art, geography, history and maths, fostering cross-curricular teaching. Alongside tools there are a range of topics across the curriculum all mapped to the National Curriculum.

Need more support? Contact us:

Call: 020 8203 1781 | Email: support@2simple.com | Visit: help.2simple.com

2. Enhanced Accessibility and Inclusion

Meeting the Government's standards on accessibility, Purple Mash ensures inclusivity:

- **Multi Device and Platform Compatibility:** Accessible on various devices (tablets, laptops, interactive whiteboards), supporting flexible learning environments. Every licence includes school and home access, enabling pupils to continue their learning at home.
- **Differentiated Resources:** Features such as voice recordings, picture passwords, and scaffolded activities enable tailored learning experiences for diverse student needs.
- **Support for SEND Learners:** Specific tools and customisable activities cater to students with special educational needs.

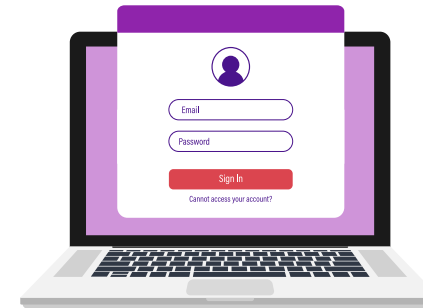
For learners where they may need more scaffolding... we might use a Purple Mash activity to embed conceptual understanding.

Anthony Lees
Computing Lead at The Cornerstone Academy Trust.

3. Safeguarding and Data Security

Purple Mash adheres to stringent data protection standards and facilitates safeguarding through:

- **Secure Logins and Privacy Controls:** Granular user settings protect student data and ensure safe interaction.



- **Monitoring Tools:** Teachers can track and review student activities, fostering a secure digital learning environment.
- **Parental Engagement:** Every subscription comes with a home licence included. The parent portal enables parents to access work and comments alongside tools within Purple Mash that enable teachers to share work with the whole school community.

Need more support? Contact us:

Call: 020 8203 1781 | Email: support@2simple.com | Visit: help.2simple.com

4. Teacher Confidence and Professional Development

The government's standards stress teacher readiness to deliver digital education effectively. Purple Mash addresses this by:

- **Step-by-Step Lesson Plans:** Simplified, structured resources enable non-specialist teachers to confidently deliver computing lessons.
- **Ongoing CPD:** Continuous and personal professional development: 1:1 consultations, bespoke training sessions, webinars and video support ensure staff are equipped and kept updated.
- **Reduced Workload:** Automated assessment tools and ready-made resources and planning save teachers' significant time.

It's absolutely brilliant... it supports teachers who are complete computing novices.

Samantha Shallcross
Head of Computing at Bromley High Junior School.

5. Infrastructure and Operational Efficiency

The UK Government highlights robust infrastructure for digital education. Purple Mash integrates seamlessly with school systems through:

- **Single Sign-On (SSO):** Integration with platforms like Google and Microsoft reduces complexity.



- **MIS Compatibility:** Synchronisation with management systems like Wonde streamlines user management.



Groupcall



wonde

- **Universal Access:** Anytime and anywhere access to your Purple Mash tools, content and your cloud based files. Use it as your homework portal knowing that learners can access everything they need on a huge range of devices.



Need more support? Contact us:

Call: 020 8203 1781 | Email: support@2simple.com | Visit: help.2simple.com

6. Impact on Learning Outcomes

Research shows Purple Mash enhances learning outcomes by:

- **Boosting Engagement:** Tools like 2DIY3D and creative applications motivate students while developing critical thinking.

Children love being able to create their own games... it's given them a better link to see why coding is important.

Nicola Folwell

Deputy Headteacher at Glebelands Primary Academy

- **Fostering Independent Learning:** Self-guided tutorials and interactive content build pupil autonomy.

I enjoy being independent in my learning and being able to move myself forward.

Aretha

A Year 4 pupil

- **Improving Assessment Accuracy:** Real-time dashboards allow teachers to measure progress effectively.

The structure and progression within the lessons ensure that skills are consistently developed.

Tiffany Galloway

Computing Coordinator at Inmans Primary School

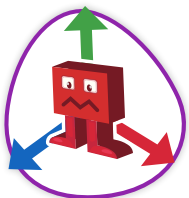
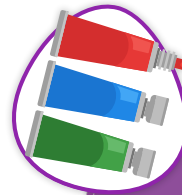
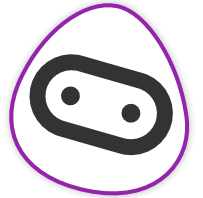
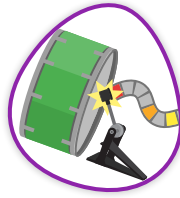
Conclusion

Purple Mash offers a comprehensive solution to meet the UK Government's digital and technology standards. Its innovative approach to curriculum delivery, accessibility, teacher support, safeguarding, and operational efficiency ensures it is a valuable asset for schools aiming to excel in digital education. Schools leveraging Purple Mash not only comply with standards but also enrich student learning and streamline teaching processes.

Download the Purple Mash features index for a full breakdown of everything that is included in Purple Mash.

Need more support? Contact us:

Call: 020 8203 1781 | Email: support@2simple.com | Visit: help.2simple.com



purple mash

One platform,
endless possibilities

Click here to
discover more



Need more support? Contact us:

Call: 020 8203 1781 | Email: support@2simple.com | Visit: help.2simple.com

2simple