

Ada Lovelace



Lived: 1815 – 1852



Place of Birth: London, England

Who is Ada Lovelace?

Ada Lovelace was a pioneering mathematician. She worked with Charles Babbage (another famous mathematician and inventor) and is now credited as being the first computer programmer.

Mathematical Visionary

Ada made connections between patterns in maths and those in the newly developing weaving industries of the time.



Ada Lovelace Day

Celebrated on second Tuesday of October.



Computer Pioneer!

Whilst evaluating Charles Babbage's Analytical Engine (a machine which performed mathematical calculations) she wrote about how the machine could repeat a series of instructions. This process, known as looping, is still used by computers today.

Legacy

Ada Lovelace's enduring legacy is celebrated on Ada Lovelace Day, inspiring women in STEM fields globally with her groundbreaking contributions to the world of computing.

**For Support
Please Contact**



+44(0) 208 203 1781
support@2simple.com



+61 (03) 8321 4990
info@2simple.com.au



+27(0) 10 201 7015
info@2simple.co.za



Maria Sibylla Merian



Lived: 1647 – 1717

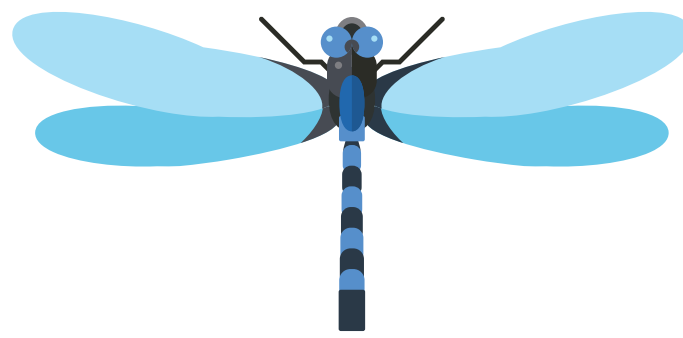


Place of Birth: Frankfurt, Germany



Who is Maria Sibylla Merian

Maria Sibylla Merian was a famous naturalist and scientific illustrator renowned for her contributions to the field of entomology, which is the study of insects.



Unique illustrations

When she was a young girl, Maria Sibylla Merian developed a keen interest in insects and plants. She went on to carefully document the life cycles of insects through detailed illustrations.

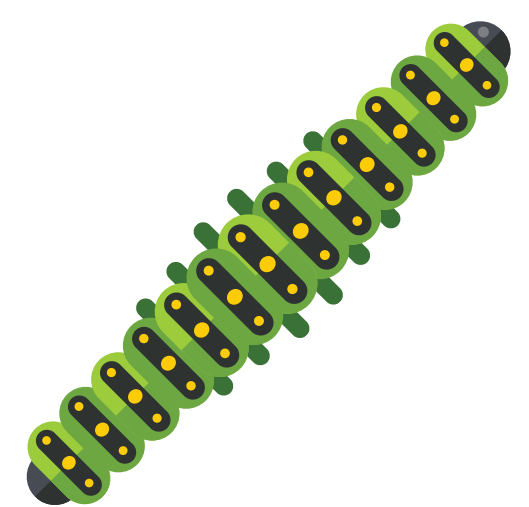
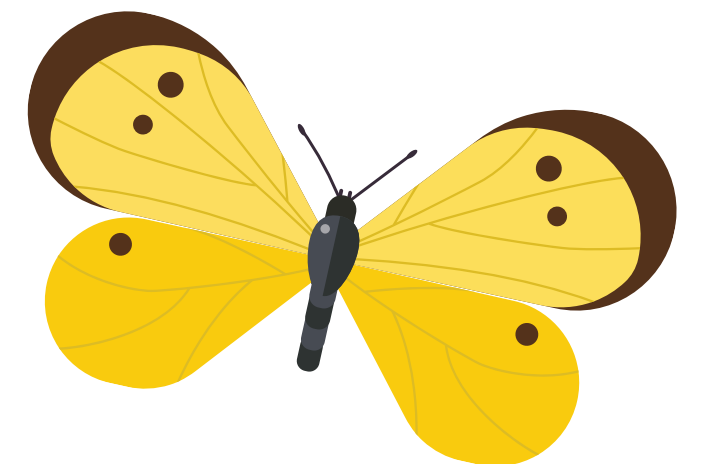
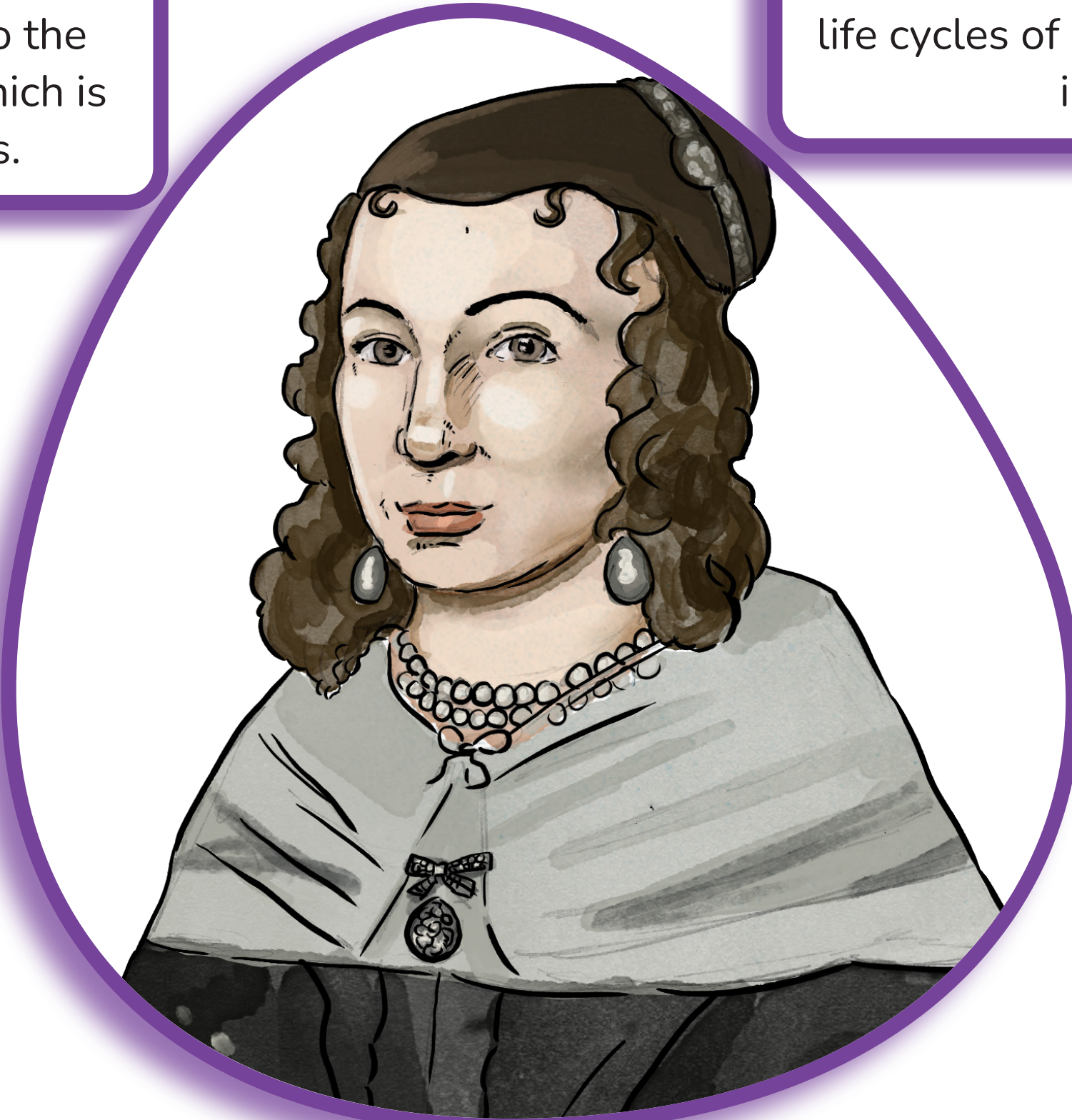


Adventurer

Merian embarked on a daring journey to Suriname, a country in South America.

This was a big adventure at a time when travel was not as easy as it is today.

During her time in Suriname, she continued to observe and document the unique insects and plants found there.



Legacy

In 1705, Maria Sibylla Merian published a book, which translates to “The Metamorphosis of the Insects of Suriname.” This book contained beautiful illustrations showing the life cycles of insects she had observed in Suriname. Her work laid the foundation for future scientists and artists to explore and document the natural world.

**For Support
Please Contact**



+44(0) 208 203 1781
support@2simple.com



+61 (03) 8321 4990
info@2simple.com.au



+27(0) 10 201 7015
info@2simple.co.za



Helen Sharman



Lived: 1963 – present



Place of Birth: Sheffield, England

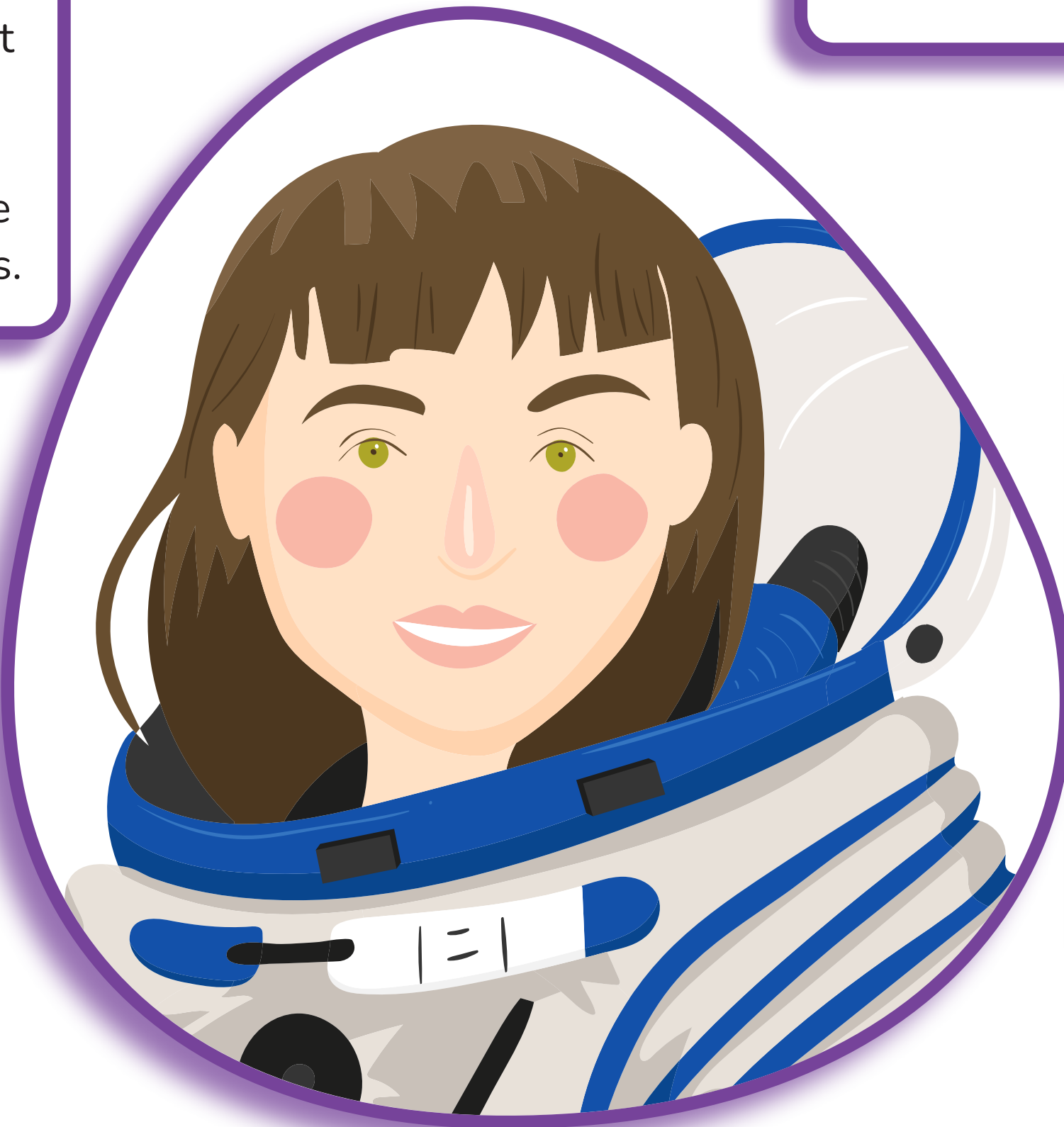


Who is Helen Sharman?

Helen Sharman was the first British astronaut to travel to space! She made history as the first woman to visit the Mir Space Station in 1991 and continues to inspire future space enthusiasts.

Space Pioneer!

Helen was selected from 30,000 applicants to be Britain's first astronaut. On 18th May 1991, she embarked on an eight-day mission

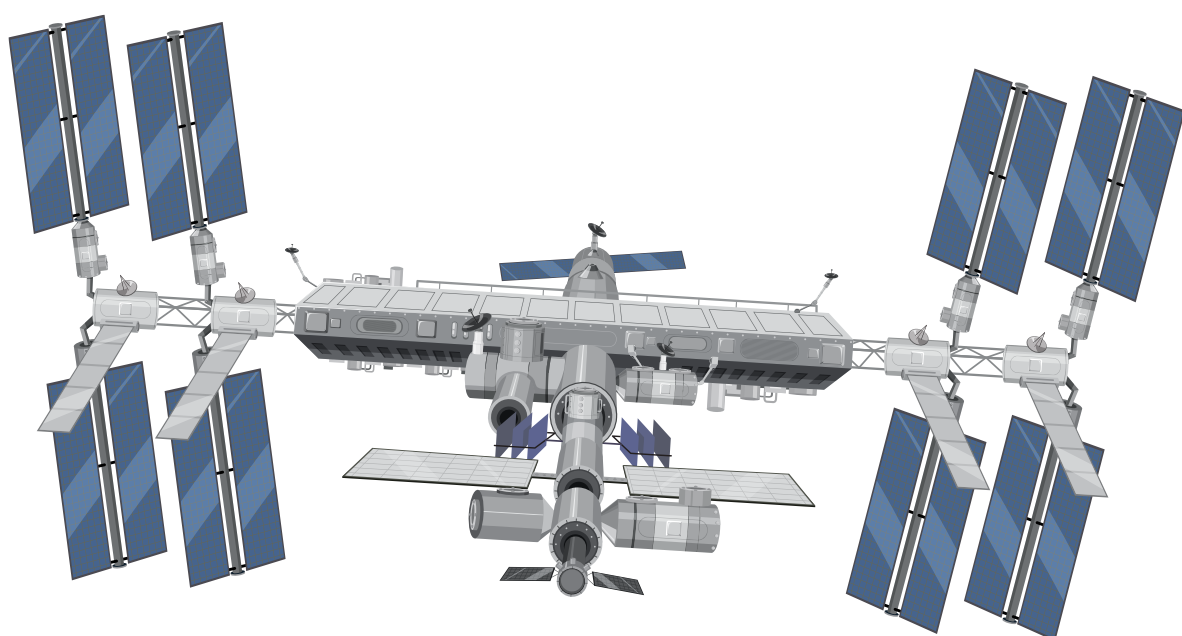
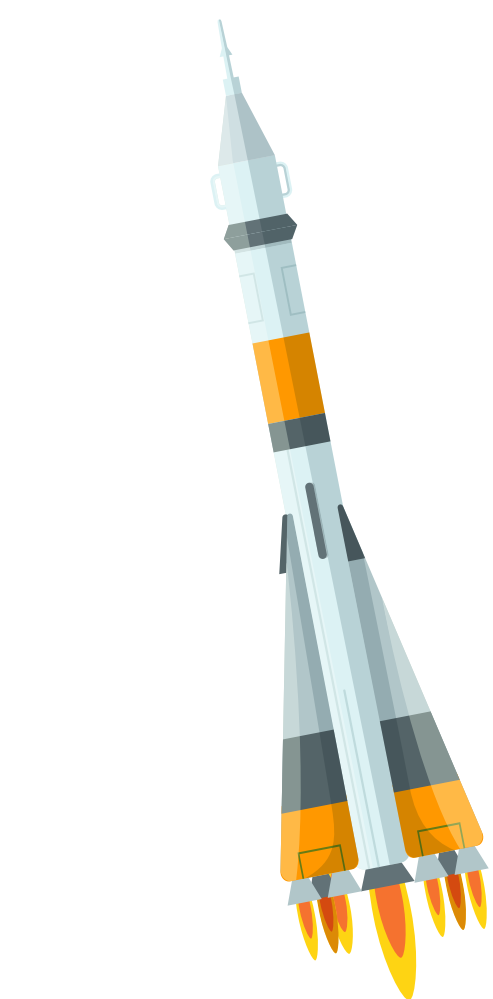


Scientific Achievements

At Mir, Helen carried out scientific investigations in the low gravity atmosphere, including medical and communication tests.

Legacy

Helen has received many awards for her pioneering achievements with space exploration. She continues to actively encourage young people to get involved with learning about science and technology.



**For Support
Please Contact**



+44(0) 208 203 1781
support@2simple.com



+61 (03) 8321 4990
info@2simple.com.au



+27(0) 10 201 7015
info@2simple.co.za



Katherine Johnson



Lived: 1918 – 2020



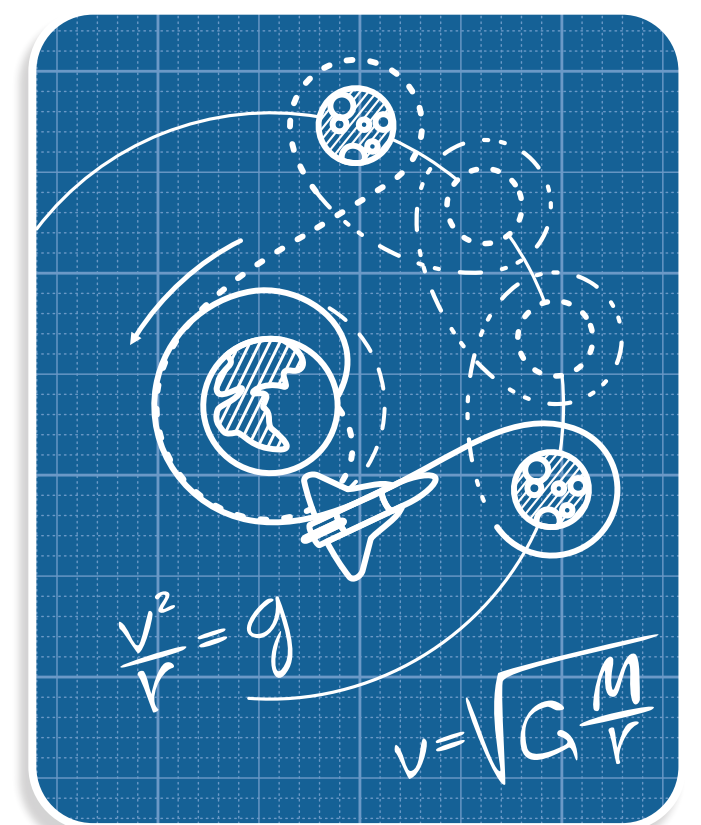
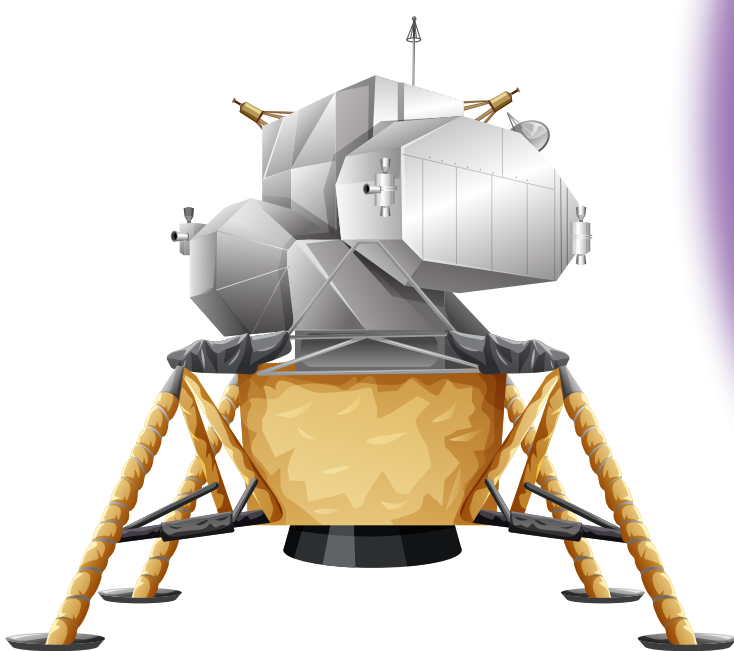
Place of Birth: West Virginia, USA

Who is Katherine Johnson?

Katherine Johnson was a brilliant mathematician known for working out the paths that spacecrafts took for historic space missions.

Space Math Genius!

Katherine worked at NASA performing many complicated mathematical tasks. One of her biggest achievements was helping man land on the moon for the first time in 1969.



Trailblazing Mathematician

Katherine overcame racial and gender prejudices during her life. Her mathematical work contributed to many of NASA's successes.

Legacy

Katherine's contributions to making manned space exploration possible resulted in her receiving lots of awards. During her later years, she visited many schools to encourage children to study maths and science

**For Support
Please Contact**



+44(0) 208 203 1781
support@2simple.com



+61 (03) 8321 4990
info@2simple.com.au



+27(0) 10 201 7015
info@2simple.co.za



Maggie Aderin-Pocock



Lived: 1968 - present



Place of Birth: London, England

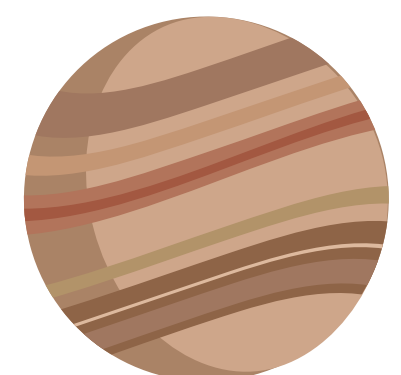
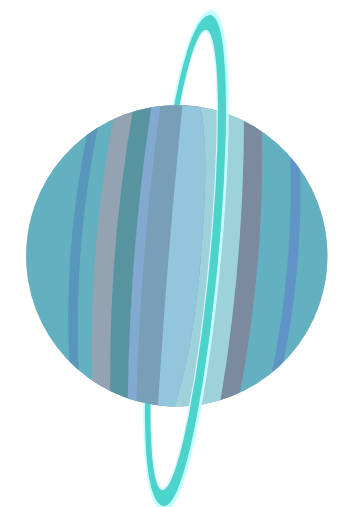
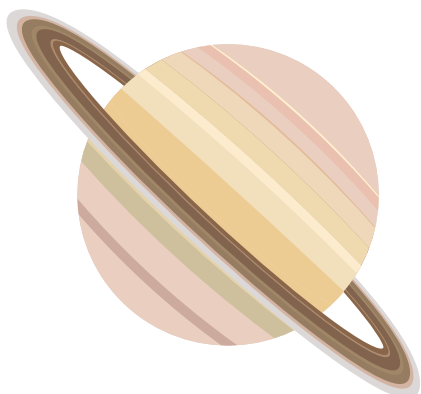


Who is Maggie Aderin-Pocock?

Maggie Aderin-Pocock is a British space scientist and engineer who loves studying stars and educating about space.

Fun Fact!

In 2023, Mattel created a Barbie doll of Maggie Aderin-Pocock to celebrate International Women's Day.



Cool Job!

She has worked on missile warning systems and helped invent a device to detect landmines. As a space scientist, presenter and speaker at schools, she educates about space, encouraging children to explore science.

Achievements

Maggie achieved extremely well academically and has the title 'Doctor of Mechanical Engineering.' She was also awarded royal titles by Queen Elizabeth II and King Charles for services to science education and diversity making her Dame Aderin-Pocock.

**For Support
Please Contact**



+44(0) 208 203 1781
support@2simple.com



+61 (03) 8321 4990
info@2simple.com.au



+27(0) 10 201 7015
info@2simple.co.za



Mary Anning



Lived: 1799 - 1847

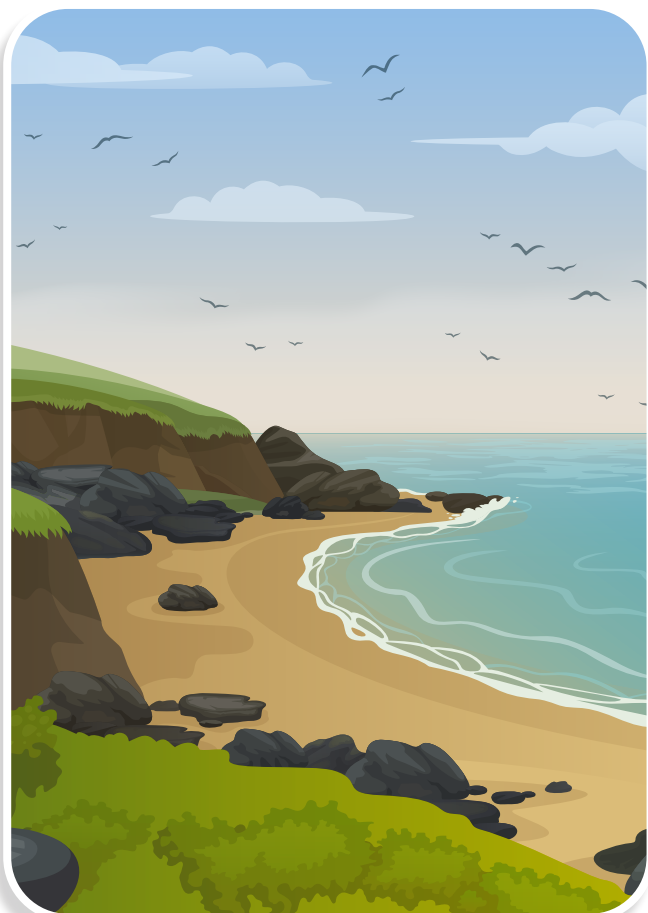


Born in Dorset, England



Who is Mary Anning?

Mary was a fossil hunter who grew up in Dorset which is now known as the Jurassic coast because of the fossil evidence to be found there. Her most famous discovery was the first Plesiosaur skeleton.



Fossil Wonder!

At the age of 12, she discovered a 5.2m fossilised skeleton. It was later discovered to be Ichthyosaurus.

Achievements

Mary's work transformed understanding; her fossils are displayed in museums and continue to inspire future scientists exploring Earth's history.



Pioneering Palaeontologist

People at the time thought that the fossilised skeletons were so strange that they must be fake. Mary Anning was a pioneering palaeontologist but was not recognised for her efforts because she was poor and female.



**For Support
Please Contact**



+44(0) 208 203 1781
support@2simple.com



+61 (03) 8321 4990
info@2simple.com.au



+27(0) 10 201 7015
info@2simple.co.za



Mary Seacole



Lived: 1805 - 1881



Place of Birth: Kingston, Jamaica

Who is Mary Seacole?

Mary Seacole was famous for going to help injured British soldiers during the Crimean War in Russia.

Healthcare Provider

Mary was known for her expertise in herbal medicines. She was skilled in using natural remedies from plants and herbs to help treat various illnesses and injuries that soldiers obtained on the battlefield.



Compassionate Caregiver

Due to her kind and caring nature, Mary was soon given the name 'Mother Seacole' by the soldiers she nursed back to health. She went above and beyond to provide comfort for those who needed it most.

Legacy

Mary Seacole embodied kindness, love and bravery and her story teaches people to use their talents for good.

**For Support
Please Contact**



+44(0) 208 203 1781
support@2simple.com



+61 (03) 8321 4990
info@2simple.com.au



+27(0) 10 201 7015
info@2simple.co.za



Zaha Hadid



Lived: 1950 -2016



Place of Birth: London, England

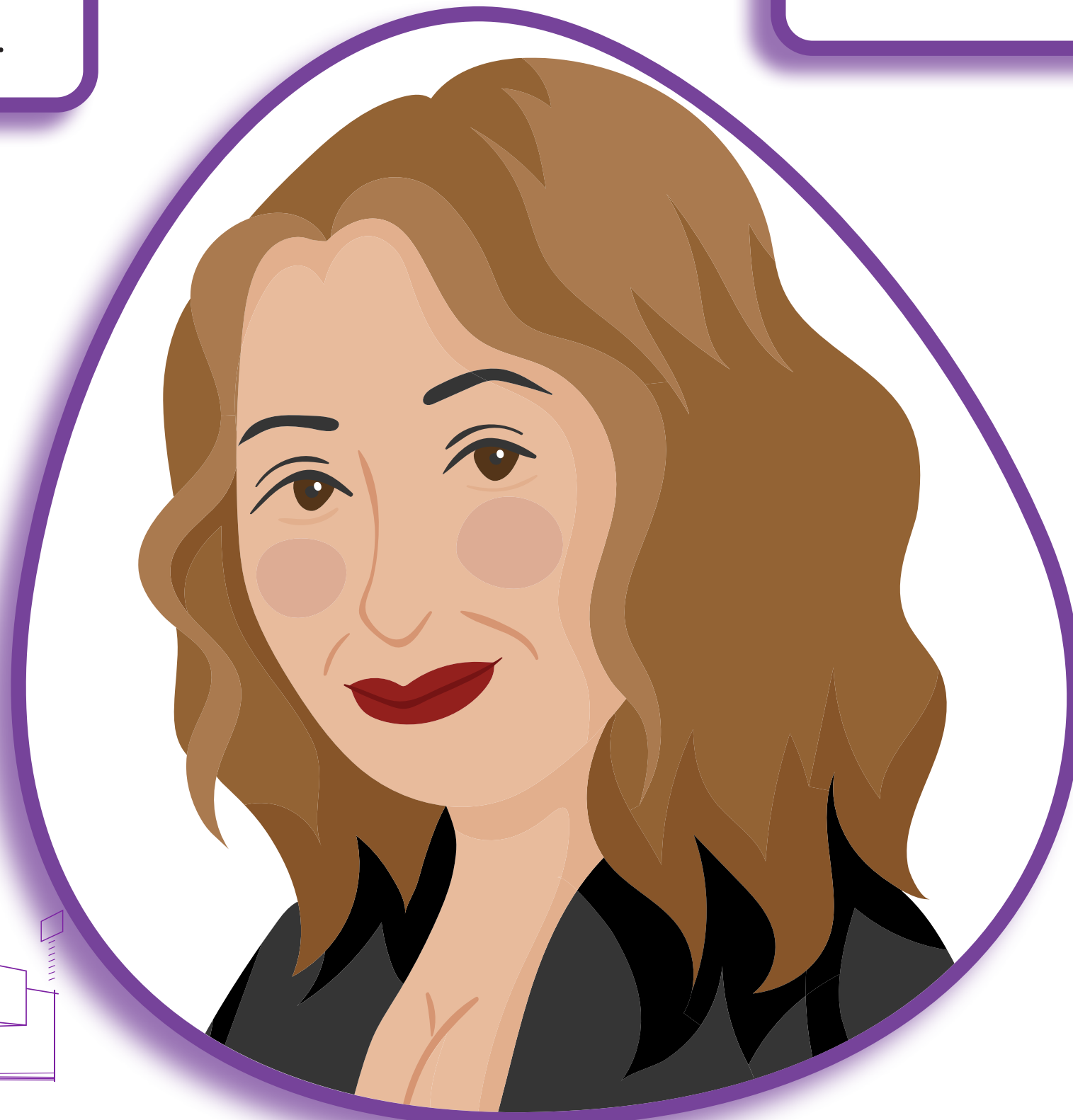


Who is Zaha Hadid?

Dame Zaha Hadid, a British-Iraqi architect, pushed the boundaries of what design and architecture could be.

Astonishing Architecture

Zaha became the first woman to be awarded the Pritzker Architecture Prize – one of the world's leading architecture awards.



Architectural Marvels!

Zaha cared about the buildings she would design. Her works were inspired by the curves and lines she would see in nature. She would spend time researching a local area before deciding on her final design.

Legacy

Zaha Hadid's legacy lives on in the buildings that she helped to create. They stand as testaments to her vision and creativity and there is no doubt that her work has inspired generations of architects worldwide.

**For Support
Please Contact**



+44(0) 208 203 1781
support@2simple.com



+61 (03) 8321 4990
info@2simple.com.au



+27(0) 10 201 7015
info@2simple.co.za

